

# St Joseph's Merewether Playgroup

## Calling all families with children 0-5 years of age!

We invite you to join us at St Joseph's Merewether Playgroup. St Joseph's Merewether Playgroup is a community playgroup open to all families in the area. Our playgroup sits under the umbrella of St Benedict's Parish and is a safe & fun environment. It provides an opportunity for your children to socialise with other children while developing a range of early learning skills through free play and craft activities.... Not to mention, a great opportunity for the parents and carers to meet, socialise and relax with a tea / coffee!

### The details...

We meet every Thursday during the school term, 9:30am—11:30am, in the school hall (entrance off Union Street). Pop in as little or as much as you like.

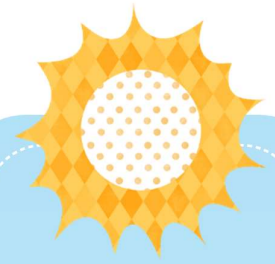
### What to bring...

Bring your child's own morning tea, lunch and water bottle. Tea & coffee and a well-deserved morning tea treat is provided for the parents and carers, please help yourself in the kitchen.... And relax!

### Fees...

- ◆ The term fees are \$20, payable in cash in the first 3 weeks of the term.
- ◆ Alternatively, you may pay \$5 for casual sessions throughout the term... just pop in when it suits!

We look forward to welcoming you into our Playgroup Community soon. Please call or email the playgroup leader if you have any questions.



### Keep in touch

---

#### Facebook Group

Come and join our little Playgroup community on Facebook, search: St Joseph's Merewether Playgroup.

Email the committee at: [stjimplaygroup@gmail.com](mailto:stjimplaygroup@gmail.com)

### Important Dates

---

Each term a few special events will be scheduled. For example: Reptile show, magic show, movement/dance activities, disco... Be sure to check out our flyer for the term or keep up to date on our Facebook page.

